

Grid at a Glance

Sri Dau Ji Maharaj Yamuna Jan Kalyan Samiti Oba

Rameshwar
Amar Singh
Mann Singh
Damodar
Sharma
Arjun
Megh Shyam
Tikam
Lal Chand
Munesh



Features

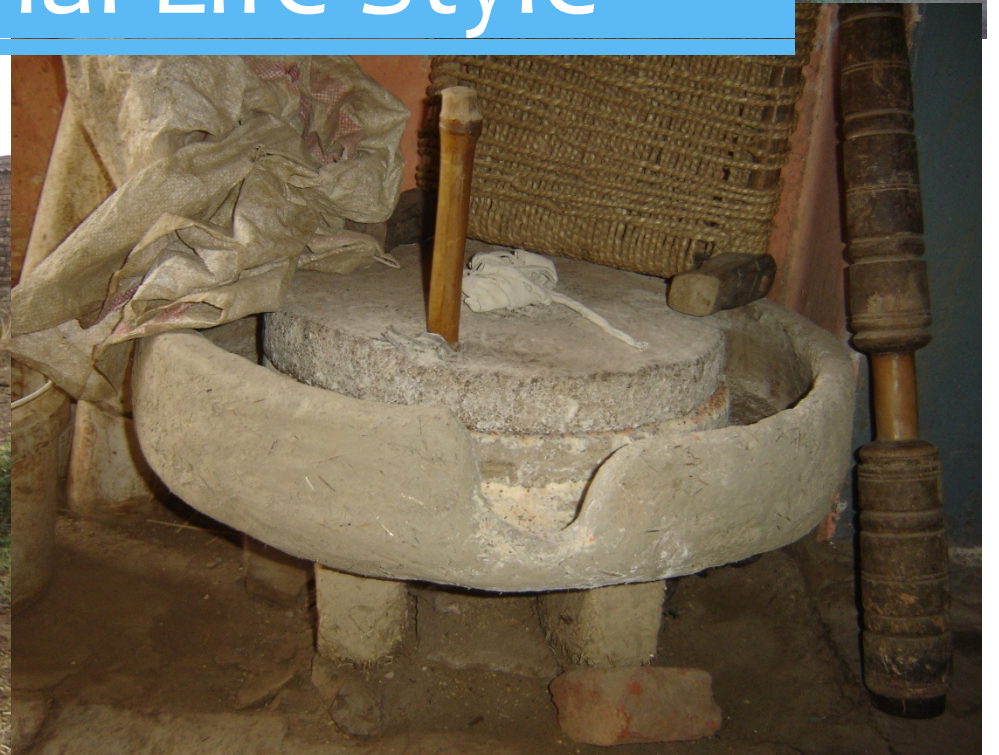
- Land of Lord Krishna
- Yamuna in polluted state
- Historical & Religious Significance (Dau Ji temple)
- Pronounced meander in the river

Project Activities

- Waste water management
- YES
- Plantation
- River & Village Health Monitoring
- Birds Survey
- Eco-San Toilets



Traditional Life Style

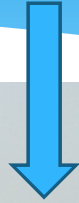


Dau Ji Temple



Pilgrims having bath in Yamuna post monsoon

Yamuna River

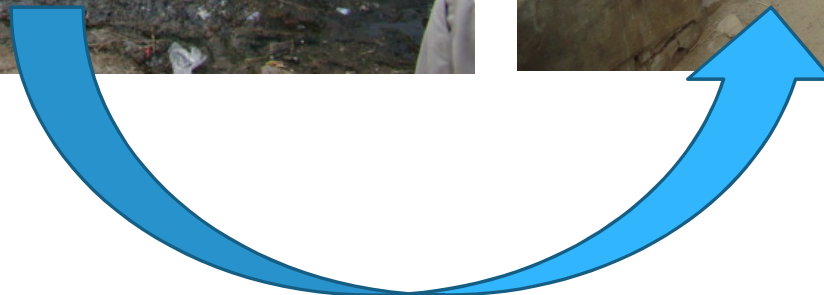


Open Defecation

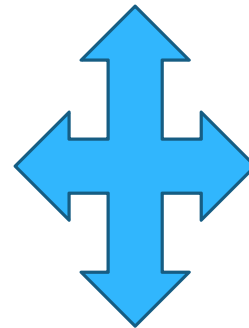
Repairing of Drain

Before

After



Yamuna Eco-Scholar



Plantation

2011-12 -500 Saplings
20012-13 -700 Saplings





Construction of Waste Water Drain



Natural Farming

Construction of Two Eco-San with Urinals



“kkSpky; dqnjrh vkvks cuok,W]

[ksr dk eky [ksr esa igqWpk,