

# Working with Data

## A Workshop on Understanding, Visualising and Mapping Data

Chennai, 3-5 August 2012

### First day

**3<sup>rd</sup> August 2012**

- |                                   |               |
|-----------------------------------|---------------|
| 1. What is data?                  | [10:30-11:15] |
| 2. What are data formats?         | [11:30-12:00] |
| 3. Presentation by Prajnya        | [12:15-12:45] |
| 4. What can be done with data?    | [14:00-14:45] |
| 5. Working with quantitative data | [15:00-15:45] |
| 6. Working with spatial data      | [16:00-16:45] |

# Working with Data

## A Workshop on Understanding, Visualising and Mapping Data

Chennai, 3-5 August 2012

### First day

**3<sup>rd</sup> August 2012**

- |                                   |                      |
|-----------------------------------|----------------------|
| <b>1. What is data?</b>           | <b>[10:30-11:15]</b> |
| 2. What are data formats?         | [11:30-12:00]        |
| 3. Presentation by Prajnya        | [12:15-12:45]        |
| 4. What can be done with data?    | [14:00-14:45]        |
| 5. Working with quantitative data | [15:00-15:45]        |
| 6. Working with spatial data      | [16:00-16:45]        |

# What is not data?

An attempt at negative definition

# What is data?

- it depends upon the context
- it depends upon the question
- it depends upon the answer

# What is data?

- it depends upon the context
- it depends upon the question
- it depends upon the answer

# What is data?

- it depends upon the context
- it depends upon the question
- it depends upon the answer

# Uses of data

- description
- argument
- documentation or archival

# Types of data

- quantitative (textual)
- qualitative (textual)
- spatial
- media (non textual, sensory)



# Types of data

- quantitative (textual)
- qualitative (textual)
- spatial
- media (non textual, sensory)

# Types of data

- quantitative (textual)
- qualitative (textual)
- spatial
- media (non textual, sensory)

# Types of data

- analog / digital
- open / closed

# Types of data

- analog / digital
- open / closed

# Open data

- License: who owns? what can be done with it?
- Freedoms: what freedoms are associated with it?
  - freedom to use
  - freedom to modify
  - freedom to redistribute
  - freedom to redistribute modifications
- Creative Commons
  - attribution or not
  - commercial or non-commercial use
  - share alike or not

# Open data

- License: who owns? what can be done with it?
- Freedoms: what freedoms are associated with it?
  - freedom to use
  - freedom to modify
  - freedom to redistribute
  - freedom to redistribute modifications
- Creative Commons
  - attribution or not
  - commercial or non-commercial use
  - share alike or not

# Open data

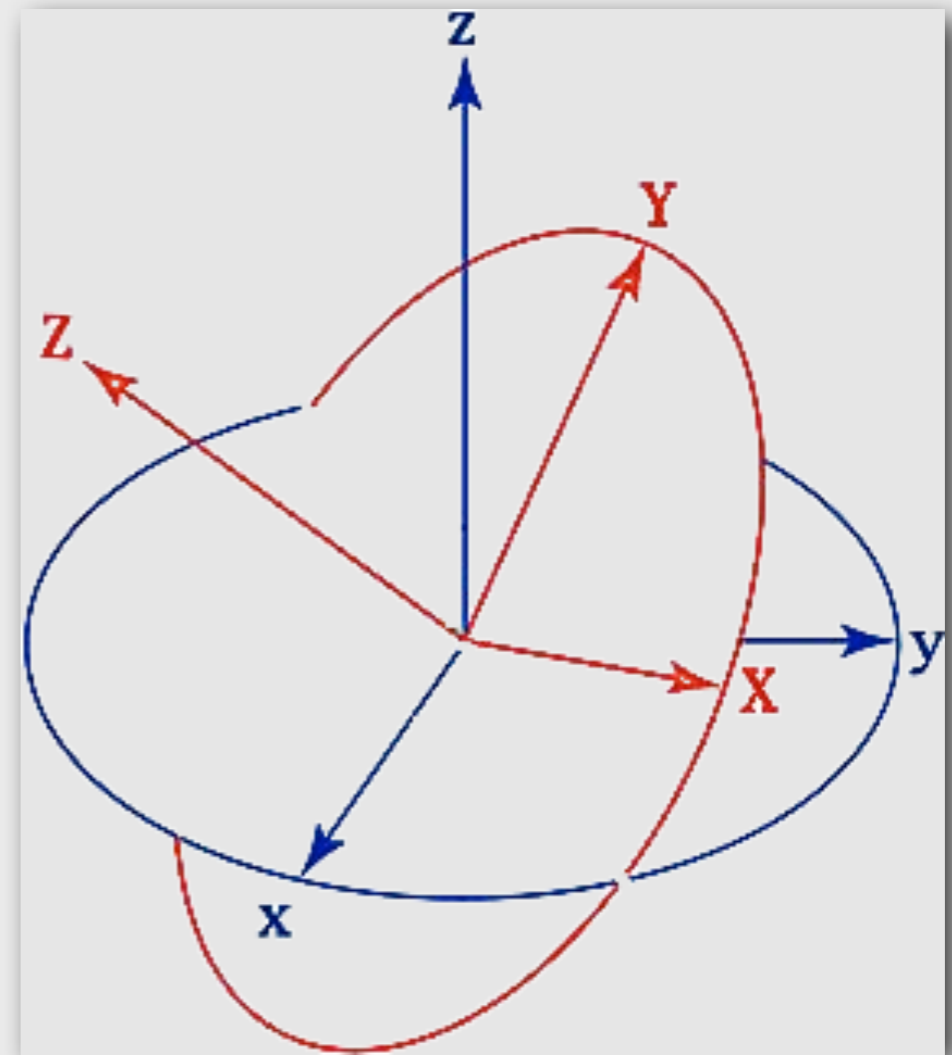
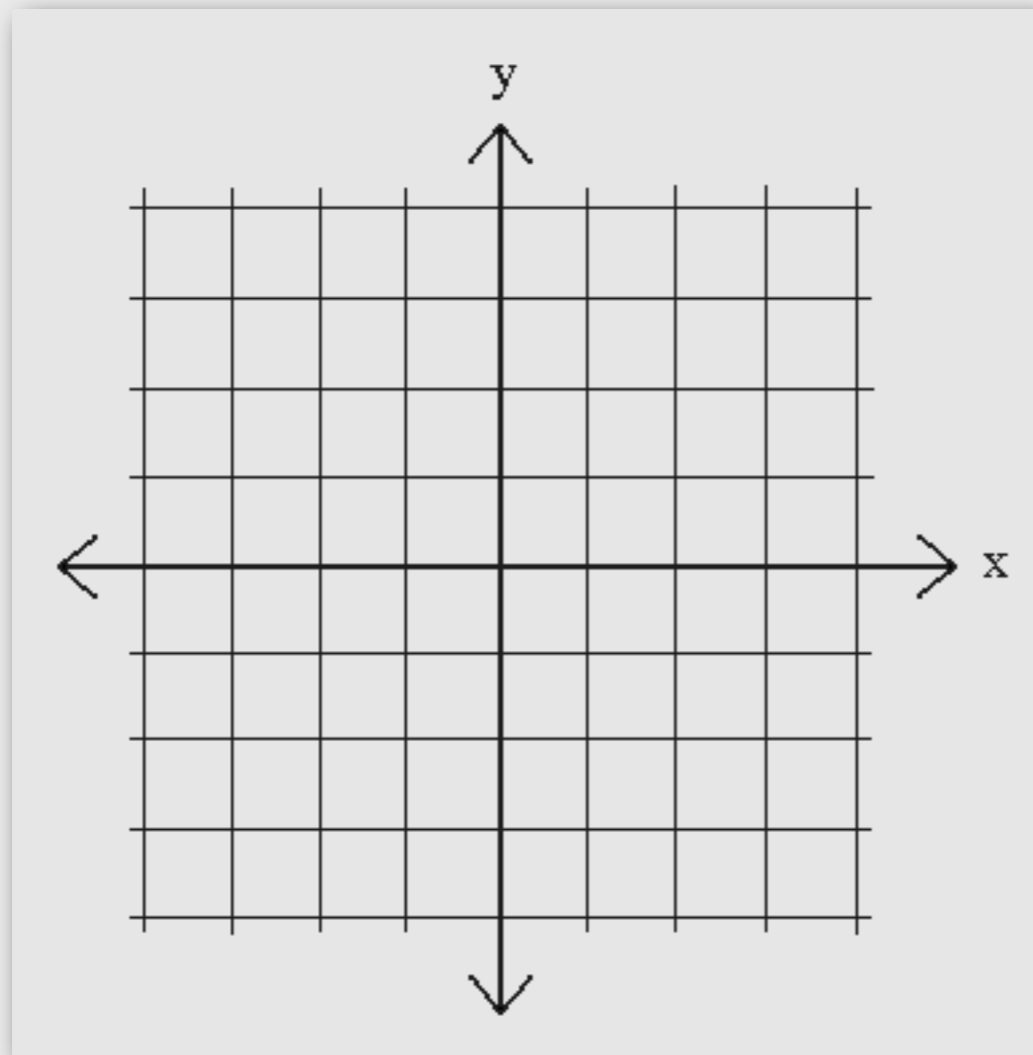
- License: who owns? what can be done with it?
- Freedoms: what freedoms are associated with it?
  - freedom to use
  - freedom to modify
  - freedom to redistribute
  - freedom to redistribute modifications
- **Creative Commons**
  - attribution or not
  - commercial or non-commercial use
  - share alike or not

# What is Spatial Data?

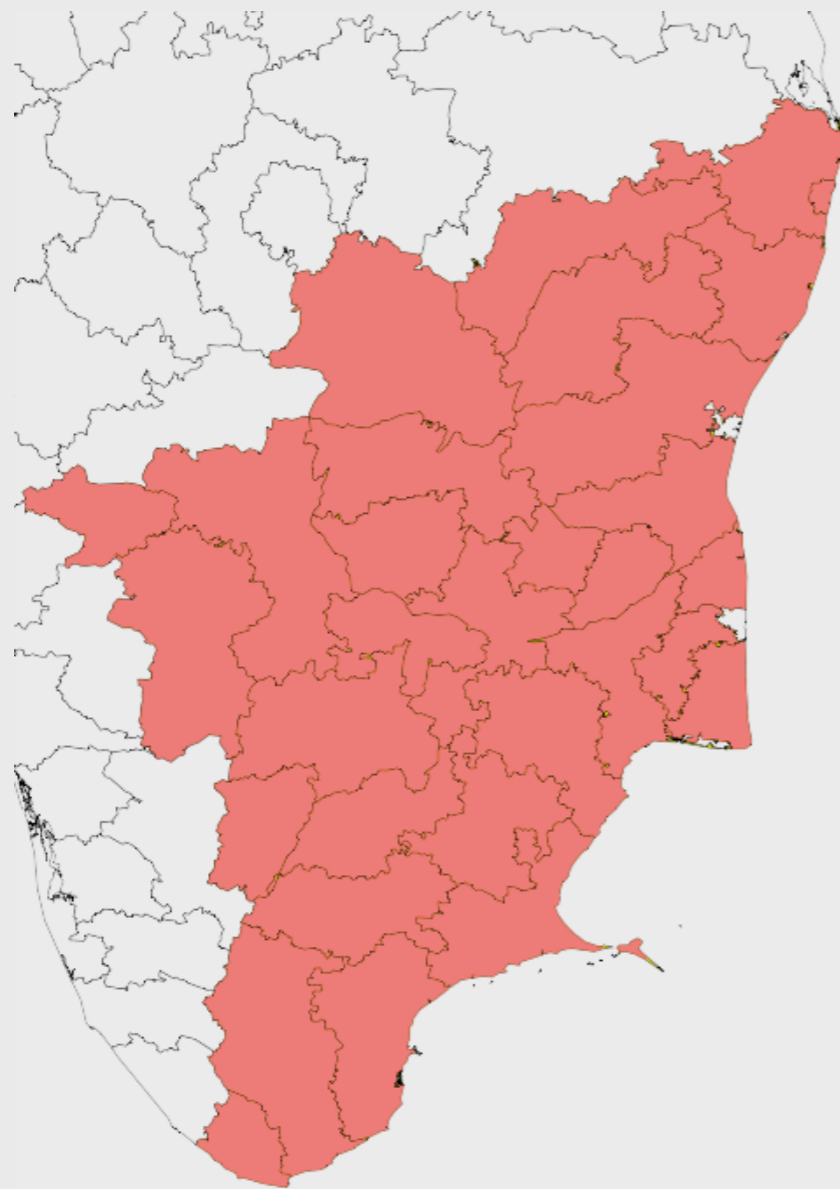
X / Y / (Z)



# Any data with a spatial component



Any data that describes the location of features and boundaries



20	Nagapattinam	Tamil Nadu
21	Sivaganga	Tamil Nadu
22	Namakkal	Tamil Nadu
23	Coimbatore	Tamil Nadu
24	Cuddalore	Tamil Nadu
25	Ramanathapuram	Tamil Nadu
26	Nilgiri	Tamil Nadu
27	Kancheepuram	Tamil Nadu
28	Madurai	Tamil Nadu
29	Thanjavur	Tamil Nadu

# Types of Spatial Data

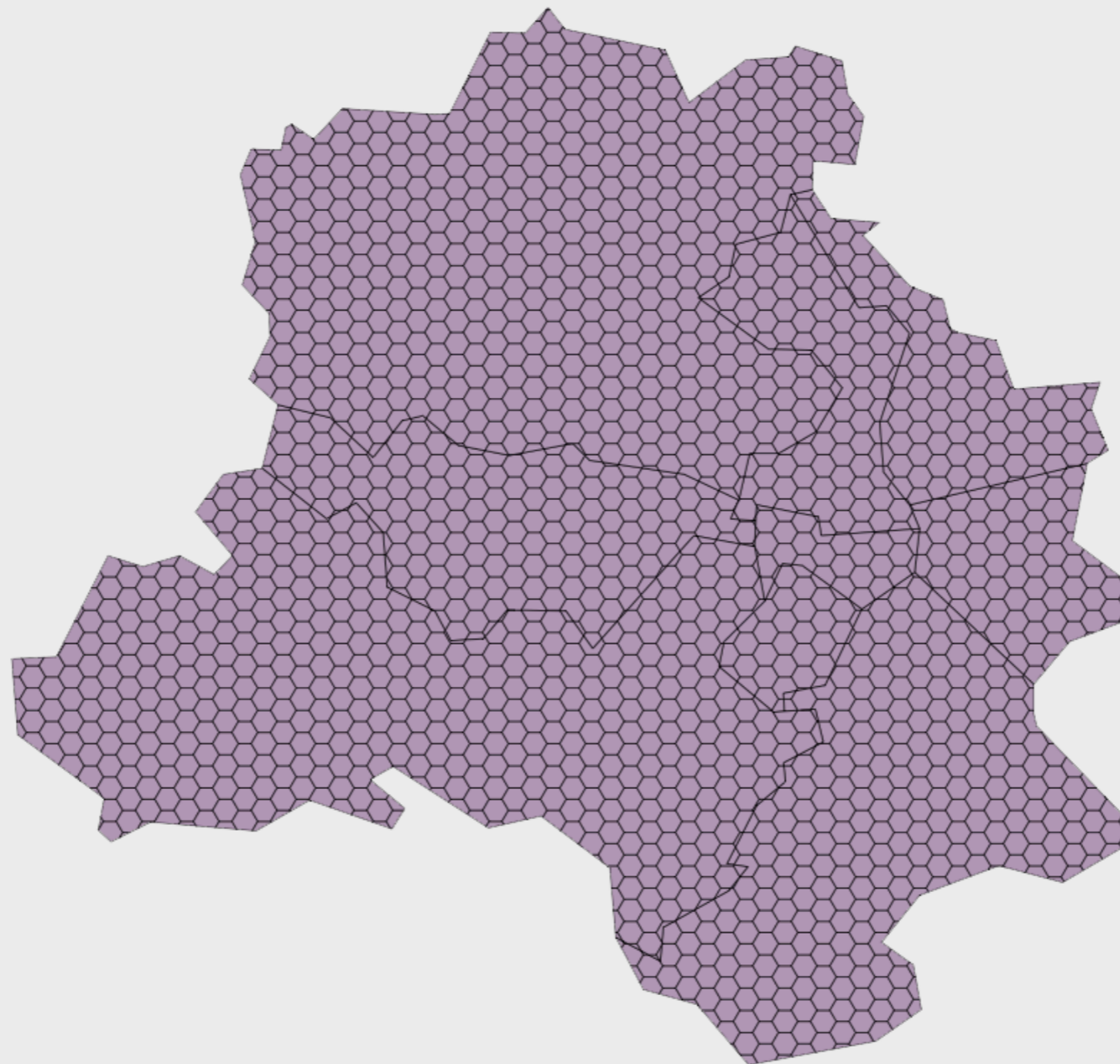
Raster

Vector

# Types of Spatial Data

**Raster**

**Vector**



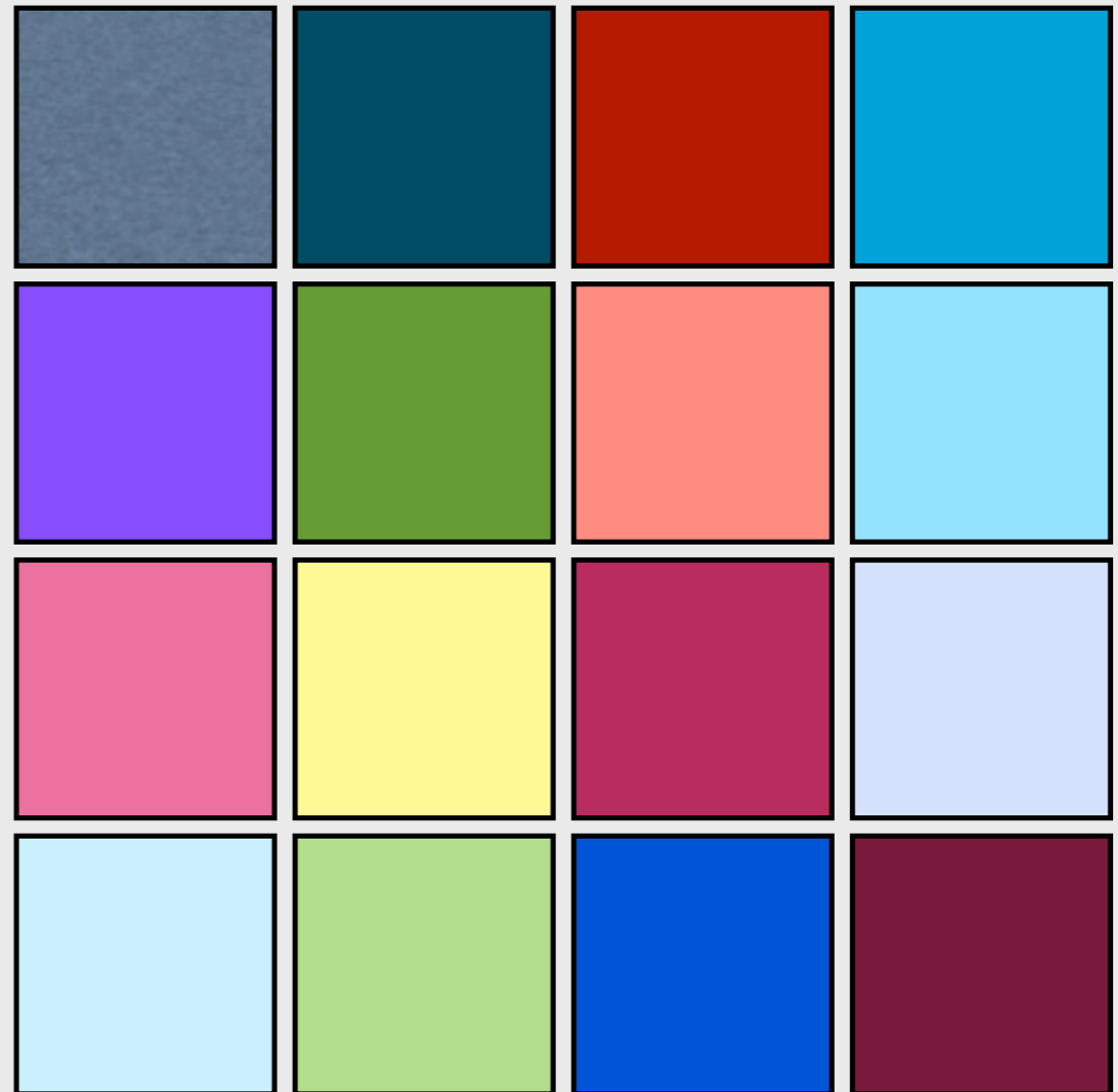
# Raster Spatial Data

Grid Cell Data

Row and Column

[ X / Y / (Z) ]

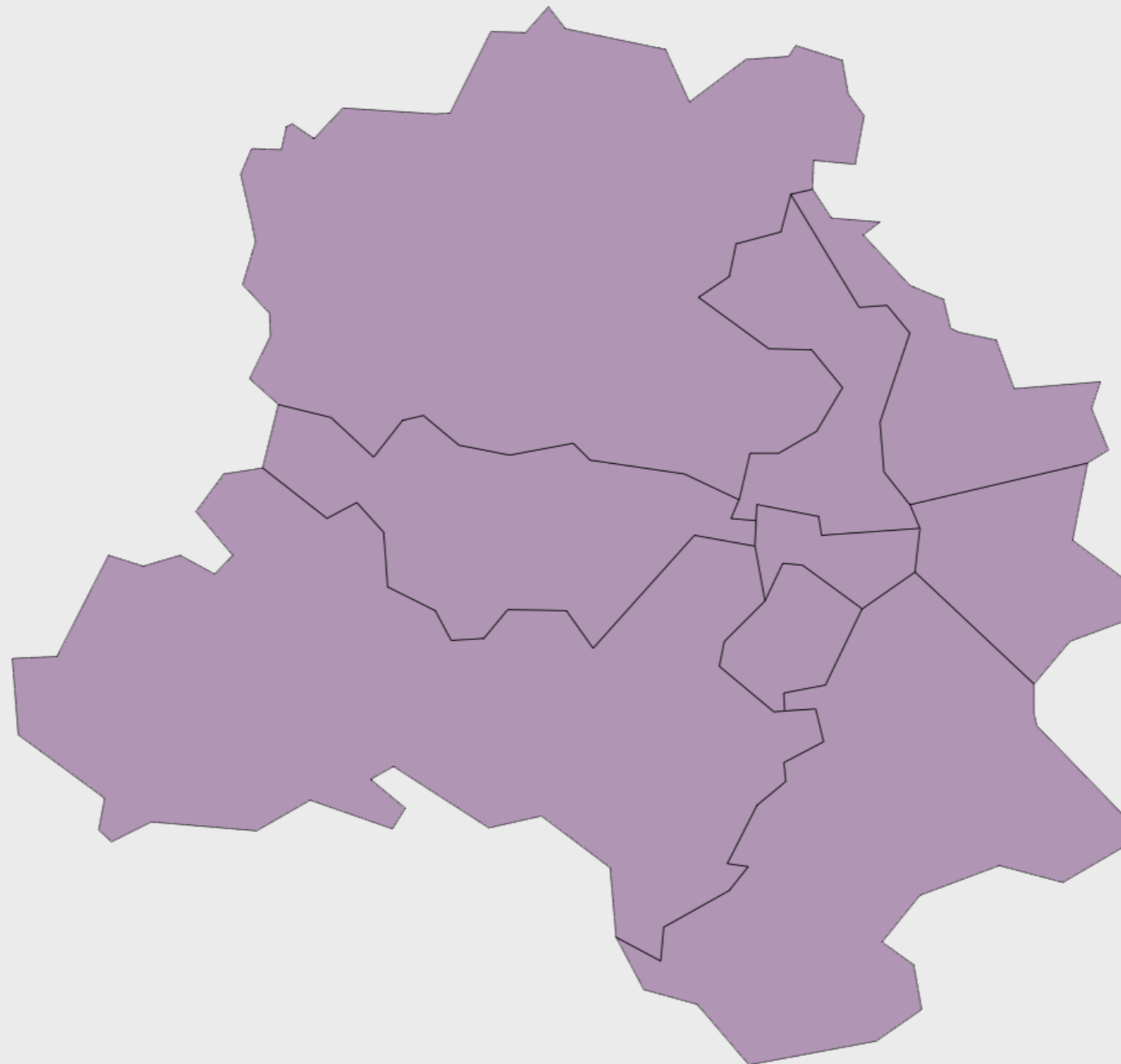
Single Attribute



# Types of Spatial Data

Raster

**Vector**



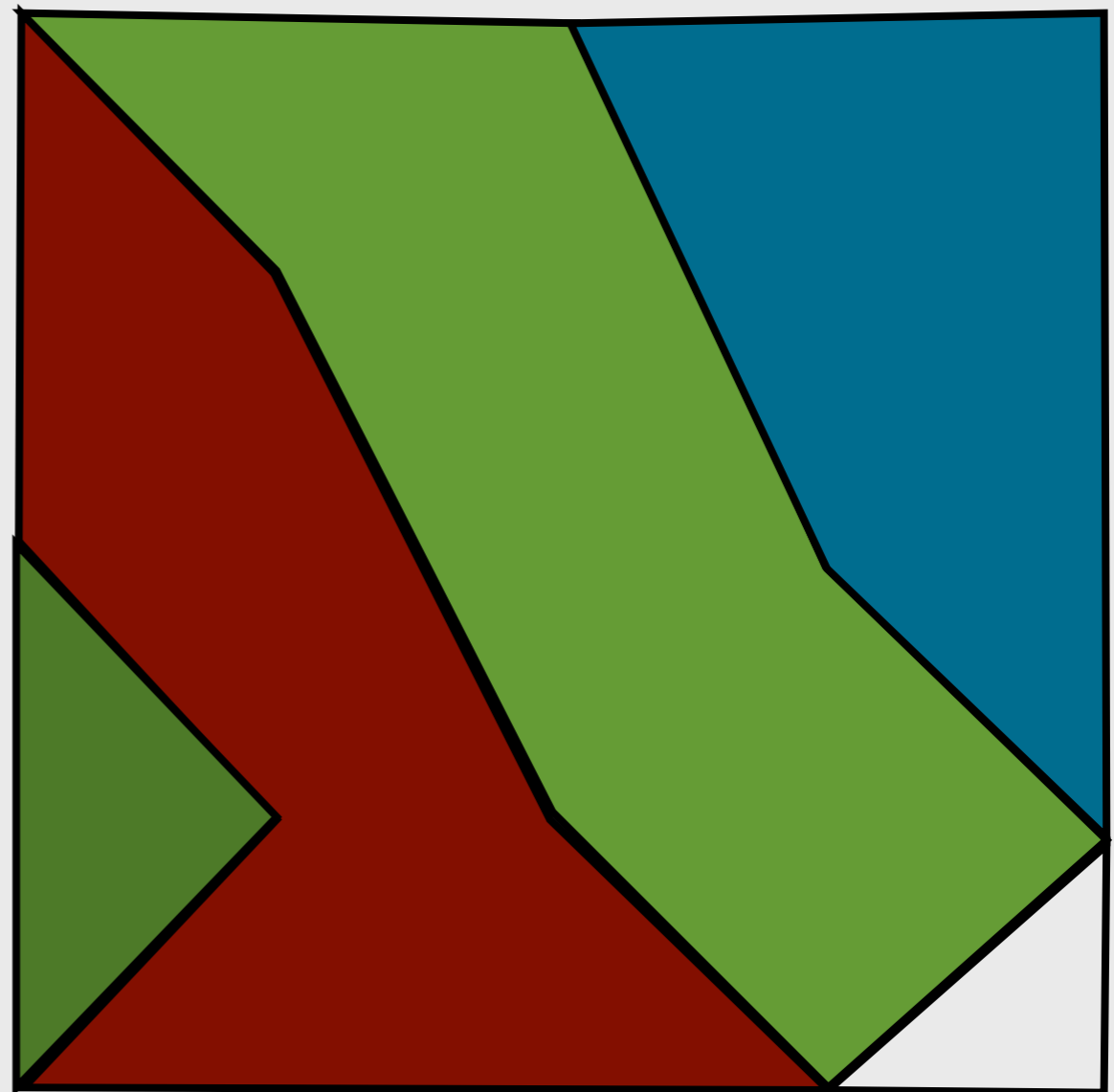
# Vector Spatial Data

Point, Line  
and Polygon

Nodes and Vertices

[ X / Y / (Z) ]

Multiple Attributes



# Vector Spatial Data

Point, Line  
and Polygon

Nodes and Vertices

[ X / Y / (Z) ]

**Multiple Attributes**

