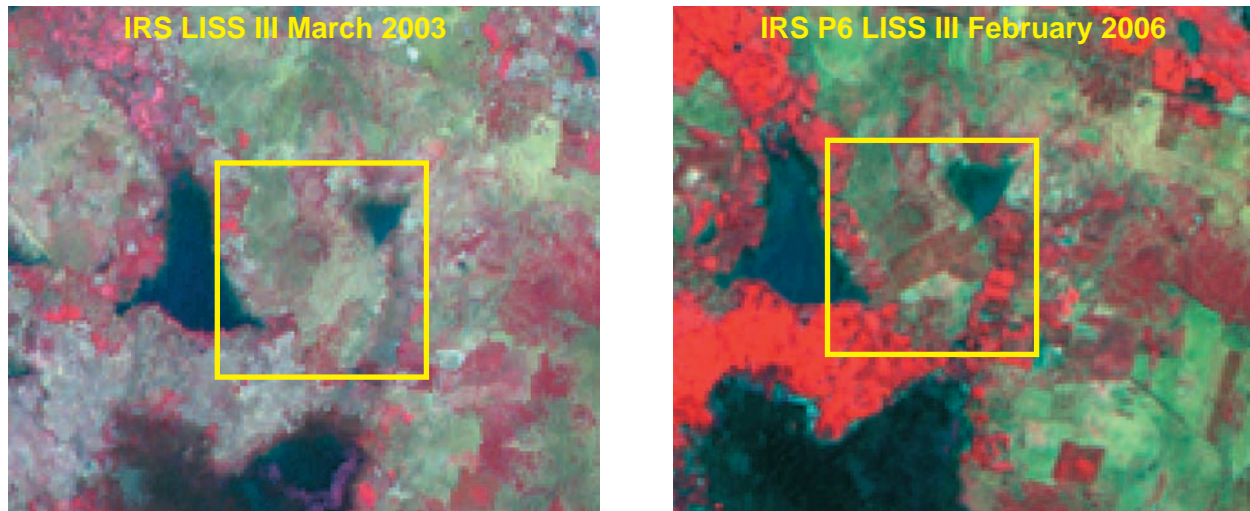


Figure. 49

Wasteland change - Land with Open Scrub to Plantation

Ojili Mandal, Nellore District, Andhra Pradesh



Chillakur Mandal, Nellore District, Andhra Pradesh

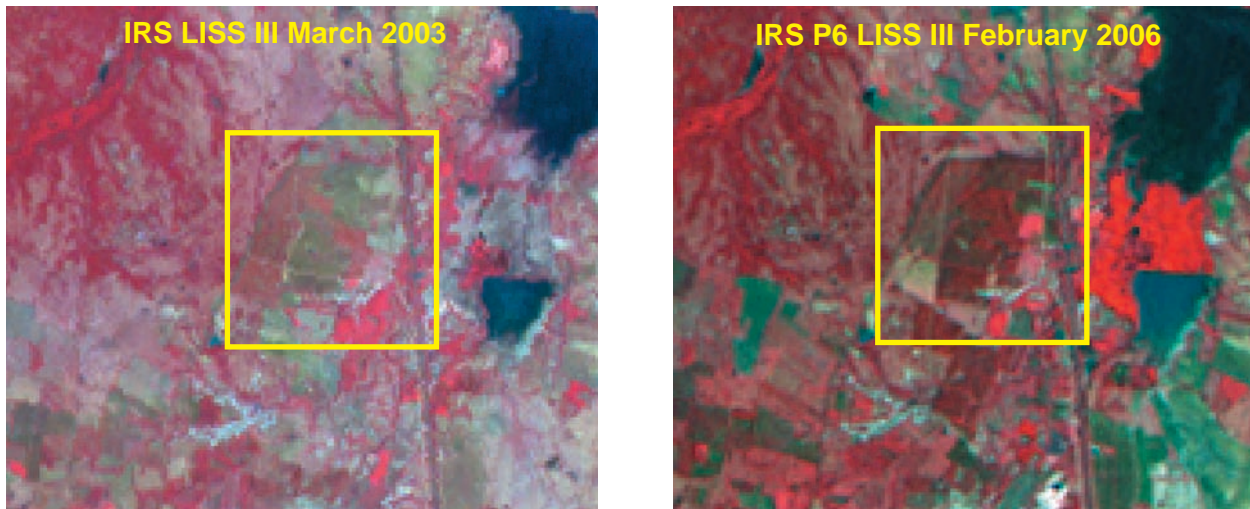
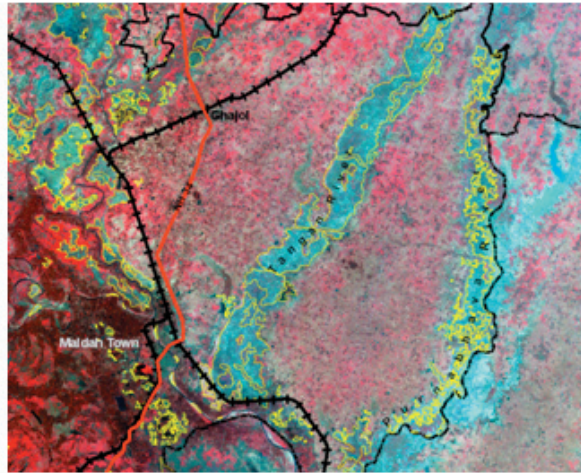


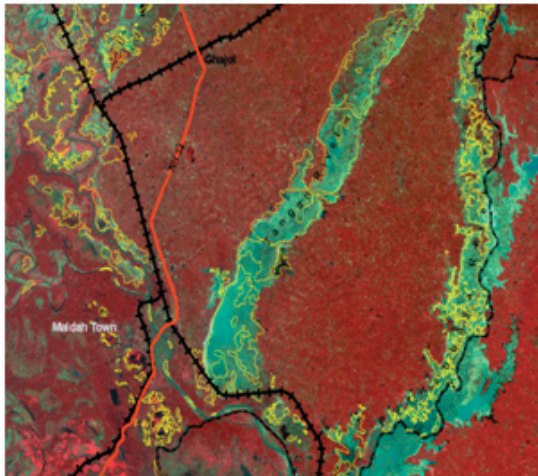
Figure. 50 **Wastelands - Interpretation Variation using single season and multi-season satellite**
Tangan and Purbhava N, Maldah District, West Bengal



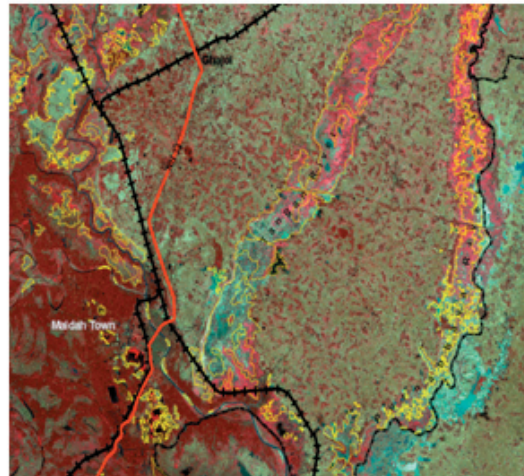
IRS LISS III 108 54 Date 14-02-2002

February 02 image shown as Waterlogged and Marshy Land

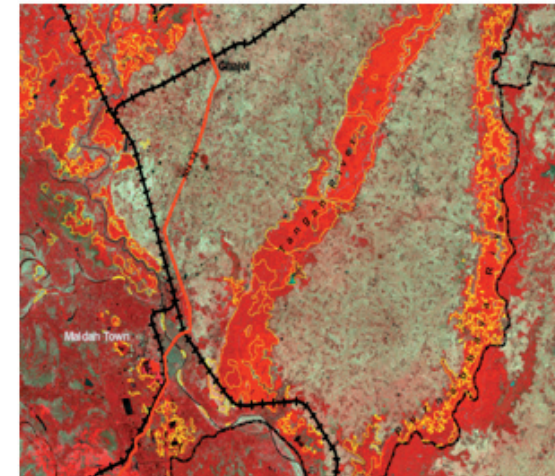
March 06 image depicting cultivation of Boro paddy



IRS LISS III 107 52 Date 15-11-2006



IRS LISS III 107 52 Date 31-01-2006



IRS LISS III 107 52 Date 20-03-2006

Figure. 51



**OPEN SCRUB AS SEEN
NEAR KHANDI
MEDAK DISTRICT, A. P.**

LON: 78.1180 E LAT: 17.5528 N

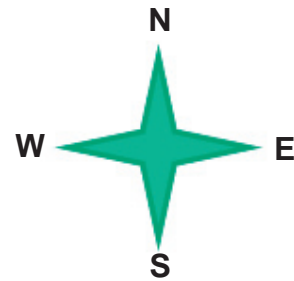


Figure. 52



**SALT AFFECTED LAND AS SEEN
NEAR NELLULENI HANUMAPURAM
ANANTHAPUR DISTRICT, A. P.**

LON: 77 09.101 E LAT: 14 50.489 N

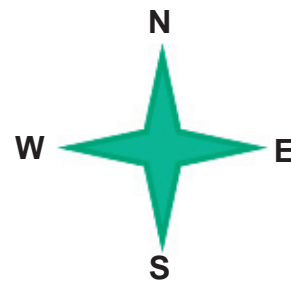
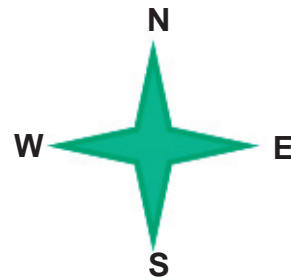


Figure. 53



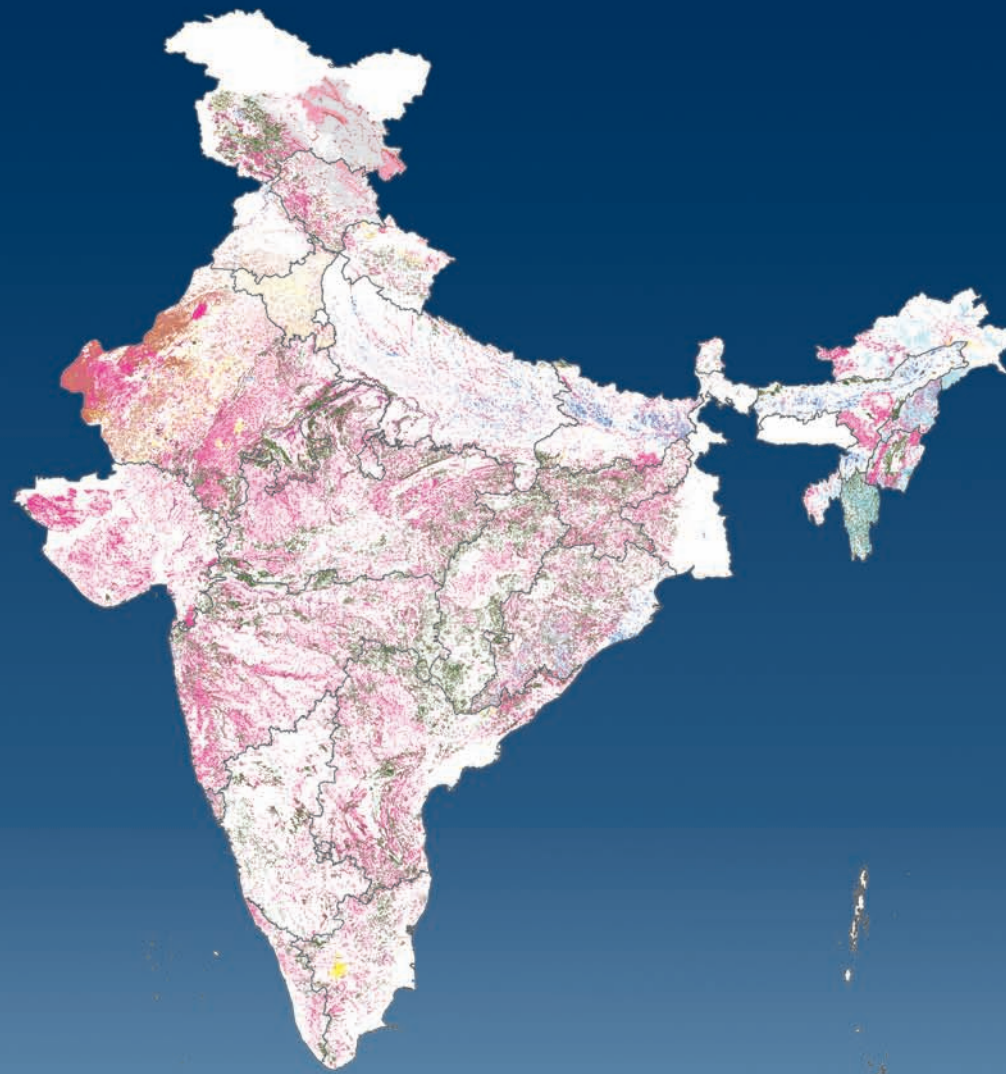
**MINE DUMPS
AS SEEN NEAR SIVANDAPALEM
CHITTOOR DISTRICT, A. P.**

LON: 79 44 11.29 E LAT: 13 43 27.62 N





India as seen from Resourcesat - 1 Satellite



Wastelands map of India - 2010