

Table 30: District - wise distribution of Wastelands
JHARKHAND

Cat-egory	Bokaro	Chatra	Deghar	Dhanbad	Dumka	Singhb-hum (E)	Garhwa	Giridih	Godda	Gumla	Haz-aribag	Jamtara	Khunti	Ko-derma	Latehar	Lo-hardaga	Pakur	Palamau	Ramgarh	Ranchi	Sahib-ganj	Sarai-kela khar-sawan	Simdega	Singhb-hum (W)	Total	
1	0.00	2.12	2.40	0.00	7.37	0.00	6.43	0.14	0.00	17.53	38.01	0.75	9.57	2.45	6.59	4.94	0.68	3.55	2.17	0.82	0.00	0.00	0.63	0.00	106.14	
2	0.00	0.00	0.00	0.00	0.00	0.00	0.00	0.00	0.00	0.00	0.00	0.00	0.00	0.00	0.00	0.00	0.00	0.00	0.00	0.00	0.00	0.00	0.00	0.00	0.00	0.00
3	19.95	16.42	48.93	6.76	16.12	81.85	76.74	12.93	9.90	165.97	52.19	13.17	164.04	16.21	252.86	3.03	12.82	19.62	96.75	193.97	31.88	91.13	292.72	378.08	2074.06	
4	146.23	138.41	226.10	109.45	146.11	204.67	220.85	318.51	46.85	104.13	201.20	118.88	74.54	184.98	209.39	64.32	44.33	169.89	105.28	88.55	78.54	148.28	318.39	132.43	3600.33	
5	0.00	0.00	0.00	0.00	0.00	0.00	0.00	0.00	0.00	0.00	0.00	0.00	0.00	0.00	0.00	0.00	0.06	0.00	0.00	0.00	0.30	0.00	0.00	0.00	0.36	
6	0.00	0.00	0.00	0.00	0.00	0.00	0.00	0.00	0.00	0.00	0.00	0.00	0.00	0.00	0.00	0.00	0.00	0.00	0.00	0.00	0.00	0.00	0.00	0.00	0.00	0.00
7	0.00	0.00	0.00	0.00	0.00	0.00	0.00	0.00	0.00	0.00	0.00	0.00	0.00	0.00	0.00	0.00	0.00	0.00	0.00	0.00	0.00	0.00	0.00	0.00	0.00	0.00
8	0.00	0.00	0.00	0.00	0.00	0.00	0.00	0.00	0.00	0.00	0.00	0.00	0.00	0.00	0.00	0.00	0.00	0.00	0.00	0.00	0.00	0.00	0.00	0.00	0.00	0.00
9	0.00	0.00	0.00	0.00	0.00	0.00	0.00	0.00	0.00	0.00	0.00	0.00	0.00	0.00	0.00	0.00	0.00	0.00	0.00	0.00	0.00	0.00	0.00	0.00	0.00	0.00
10	0.00	0.00	0.00	0.00	0.00	0.00	0.00	0.00	0.00	0.00	0.00	0.00	0.00	0.00	0.00	0.00	0.00	0.00	0.00	0.00	0.00	0.00	0.00	0.00	0.00	0.00
11	115.44	388.97	67.67	68.18	97.20	198.89	385.90	398.72	32.94	136.38	440.97	48.46	98.14	67.91	398.55	25.27	11.35	399.62	88.97	227.49	36.88	74.96	384.67	207.05	4400.59	
12	82.65	37.37	49.65	5.30	5.34	5.55	14.16	175.58	5.32	21.02	11.63	0.24	4.00	3.61	2.29	4.81	2.59	23.77	8.00	25.42	4.13	5.48	5.95	15.12	518.99	
13	0.00	0.00	0.00	0.00	0.00	0.00	0.00	0.00	0.00	0.00	0.00	0.00	0.00	0.00	0.00	0.00	0.00	0.00	0.00	0.00	0.00	0.00	0.00	0.00	0.00	0.00
14	0.00	0.00	0.00	0.00	0.00	0.00	0.00	0.00	0.00	0.00	0.00	0.00	0.00	0.00	0.00	0.00	0.00	0.00	0.00	0.00	0.00	0.00	0.00	0.00	0.00	0.00
15	0.00	0.00	0.00	0.00	0.00	0.00	0.00	0.00	0.00	0.00	0.00	0.00	0.00	0.00	0.00	0.00	0.00	0.00	0.00	0.00	0.00	0.00	0.00	0.00	0.00	0.00
16	0.00	0.00	0.00	0.00	0.00	0.00	0.00	0.00	0.00	0.00	0.00	0.00	0.00	0.00	0.00	0.00	0.00	0.00	0.00	0.00	0.00	0.00	0.00	0.00	0.00	0.00
17	0.00	0.00	0.00	0.00	0.00	0.00	0.00	0.00	0.00	0.00	0.00	0.00	0.00	0.00	0.00	0.00	0.00	0.00	0.00	0.00	0.00	0.00	0.00	0.00	0.00	0.00
18	0.00	0.00	0.00	0.00	0.00	0.00	0.00	0.00	0.00	0.00	0.00	0.00	0.00	0.00	0.00	0.00	0.00	0.00	0.00	0.00	0.00	0.00	0.00	0.00	0.00	0.00
19	0.00	0.00	0.00	0.00	0.00	0.00	0.00	0.00	0.00	0.00	0.00	0.00	0.00	0.00	0.00	0.00	0.00	0.00	0.00	0.00	0.00	0.00	0.00	0.00	0.00	0.00
20	0.26	0.08	0.17	0.00	0.00	0.65	0.00	0.00	0.99	0.00	3.43	0.00	0.00	0.00	0.00	0.00	0.32	0.07	0.87	0.63	0.34	0.00	0.00	0.00	0.00	7.82
21	0.07	0.00	0.00	0.00	0.00	0.00	0.00	0.00	0.00	0.06	0.00	0.00	0.00	0.00	0.00	0.00	0.00	0.00	0.17	0.00	0.00	0.00	0.00	0.00	0.00	0.29
22	16.91	119.37	48.63	20.81	35.64	32.88	38.52	199.51	6.05	149.46	29.26	18.61	9.32	1.31	3.21	8.98	30.33	47.72	11.18	33.91	3.61	20.25	49.38	26.70	961.56	
23	0.00	0.00	0.00	0.00	0.00	0.00	0.00	0.00	0.00	0.00	0.00	0.00	0.00	0.00	0.00	0.00	0.00	0.00	0.00	0.00	0.00	0.00	0.00	0.00	0.00	0.00
Total	381.50	702.75	443.53	210.50	307.78	524.50	742.60	1105.39	102.05	594.56	776.69	200.11	359.61	276.47	872.90	111.36	102.48	664.24	313.40	570.79	155.68	340.11	1051.75	759.38	11670.14	
TGA	2861	3706	2476	2996	4412	3533	4044	4029	2108	5321	3513	1800	2630	2545	4250	1491	1805	4455	1400	5068	1600	2640	3756	7267	79706	
% to TGA	13.33	18.96	17.91	7.03	6.98	14.85	18.36	27.44	4.84	11.17	22.11	11.12	13.67	10.86	20.54	7.47	5.68	14.91	22.39	11.26	9.73	12.88	28.00	10.45	14.64	

1. Gullied and/ or ravinous land (Medium)	6. Waterlogged and Marshy land (Seasonal)	11. Under-utilised/degraded forest (Scrub domin)	16. Sands-Coastal	21. Industrial wastelands
2. Gullied and/ or ravinous land (Deep)	7. Land affected by salinity/alkalinity (Medium)	12. Under-utilised/degraded forest (Agriculture)	17. Sands-Desertic	22. Barren Rocky/Stony waste
3. Land with Dense Scrub	8. Land affected by salinity/alkalinity (Strong)	13. Degraded pastures/ grazing land	18. Sands-Semi Stab.-Stab>40m	23. Snow covered /Glacial area
4. Land with Open Scrub	9. Shifting Cultivation - Current Jhum	14. Degraded land under plantation crop	19. Sands-Semi Stab.-Stab 15-40m	Total - Total Wasteland Area
5. Waterlogged and Marshy land (Permanent)	10. Shifting Cultivation - Abandoned Jhum	15. Sands-Riverine	20. Mining Wastelands	TGA - Total Geographical Area

Figure. 29

WASTELAND MAP

2005-06

JHARKHAND



LEGEND

- Gullied/ Ravine land-Medium ravine (1)
- Gullied/Ravine land-Deep/ very deep ravine (2)
- Scrubland - Land with dense scrub (3)
- Scrubland - Land with open scrub (4)
- Waterlogged and marshy land - Permanent (5)
- Waterlogged and marshy land - Seasonal (6)
- Land Affected by Salinity/ Alkalinity - Moderate (7)
- Land Affected by Salinity/ Alkalinity - Strong (8)
- Shifting cultivation - Current jhum (9)
- Shifting cultivation - Abandoned jhum (10)
- Under-utilised Deg Notif Forest - Scrub Dom (11)
- Under-utilised Deg Notif Forest - Agriculture (12)
- Degraded Pastures/ grazing land (13)
- Degraded Land under Plantation Crop (14)
- Sands - Desert sand (15)
- Sands - Coastal sand (16)
- Sands - Riverine (17)
- Sands - Semi-stab to stab (>40m) dune (18)
- Sands-Semi-stab to stab mod high(15-40m) dune (19)
- Mining Wastelands (20)
- Industrial Wastelands (21)
- Barren rocky area (22)
- Snow cover and/ or glacial area (23)
- Non Wasteland Area
- Major Road
- Railway Line



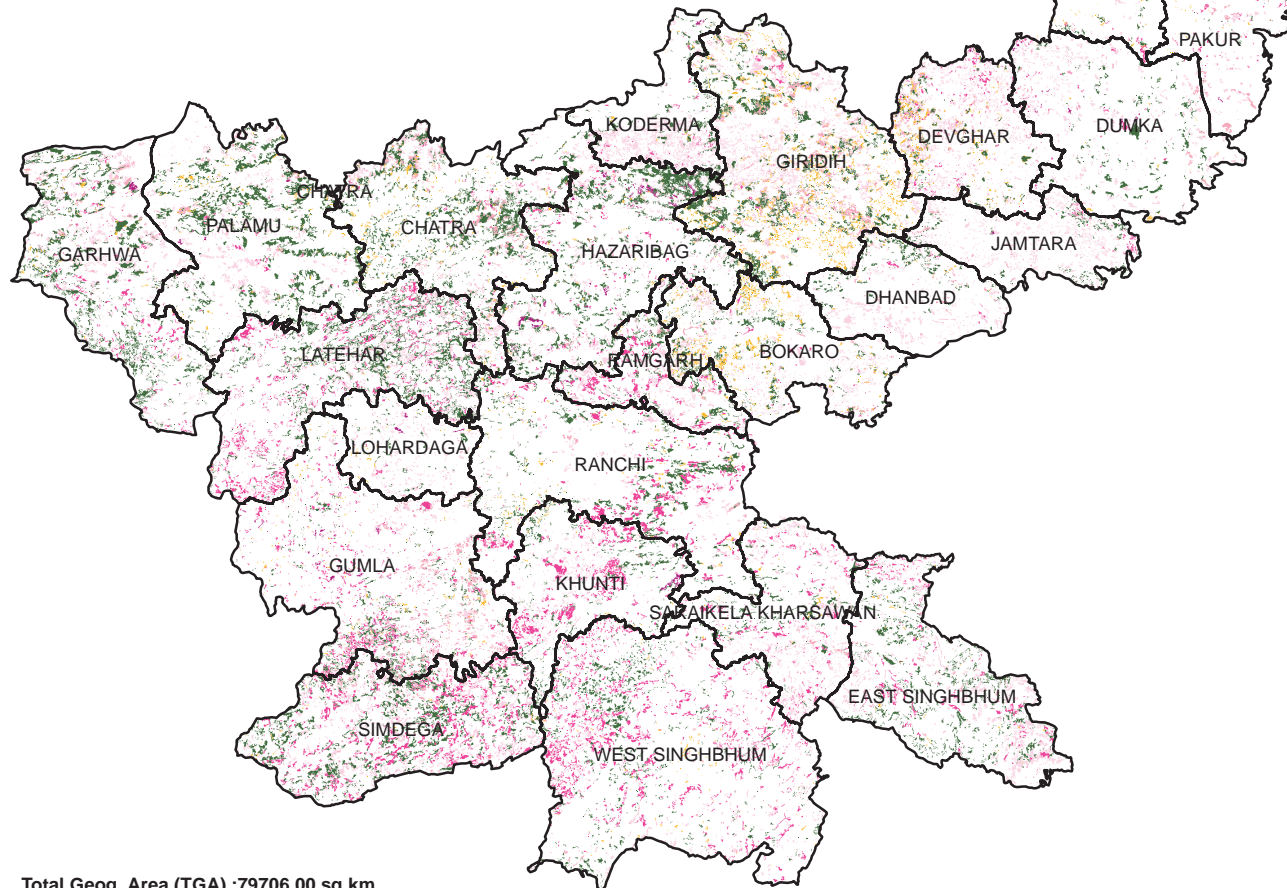
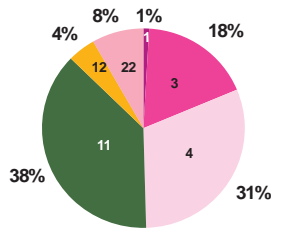
Based on 3 season data of IRS P6
LISS III (2005-06) & Limited ground checks

Partner Institution:

Jharkhand Space Applications Centre
Dept of IT, Govt of Jharkhand
Engineer's Hostel-2, Gai Chakkar, Dhurwa
Ranchi-834004
Jharkhand

Coordinated by:

Land Use Division, LRG, RS & GIS - AA
National Remote Sensing Centre
ISRO, Dept. of Space, Govt of India,
Balanagar,
Hyderabad - 500625



Total Geog. Area (TGA) : 79706.00 sq.km.
Total Wasteland Area : 11670.14 sq. km.
Wasteland Area : 14.64 %

Table 31: Jharkhand - Category-wise distribution and changes in wastelands

Area in sq.km.

SI	Wasteland Categories	2005-06	%	2003	%	Change	% diff
1	Gullied and/or ravinous land-Medium	106.14	0.13	407.14	0.51	-301.00	-0.38
2	Gullied and/or ravinous land-Deep	0.00	0.00	3.95	0.00	-3.95	0.00
3	Land with Dense Scrub	2074.06	2.60	1846.32	2.32	227.74	0.29
4	Land with Open Scrub	3600.33	4.52	462.46	0.58	3137.87	3.94
5	Waterlogged and Marshy land-Permanent	0.36	0.00	35.88	0.05	-35.52	-0.04
6	Under utilised/degraded notified forest land-Scrub dominated	4400.59	5.52	7120.15	8.93	-2719.56	-3.41
7	Under utilised/degraded notified forest land-Agriculture	518.99	0.65	643.94	0.81	-124.95	-0.16
8	Degraded pastures/grazing land	0.00	0.00	39.91	0.05	-39.91	-0.05
9	Sands-Riverine	0.00	0.00	2.31	0.00	-2.31	0.00
10	Mining wastelands	7.82	0.01	88.03	0.11	-80.21	-0.10
11	Industrial wastelands	0.29	0.00	63.07	0.08	-62.78	-0.08
12	Barren rocky area	961.56	1.21	452.10	0.57	509.46	0.64
	Total	11670.14	14.64	11165.26	14.01	504.88	0.63
	TGA	79706.00					