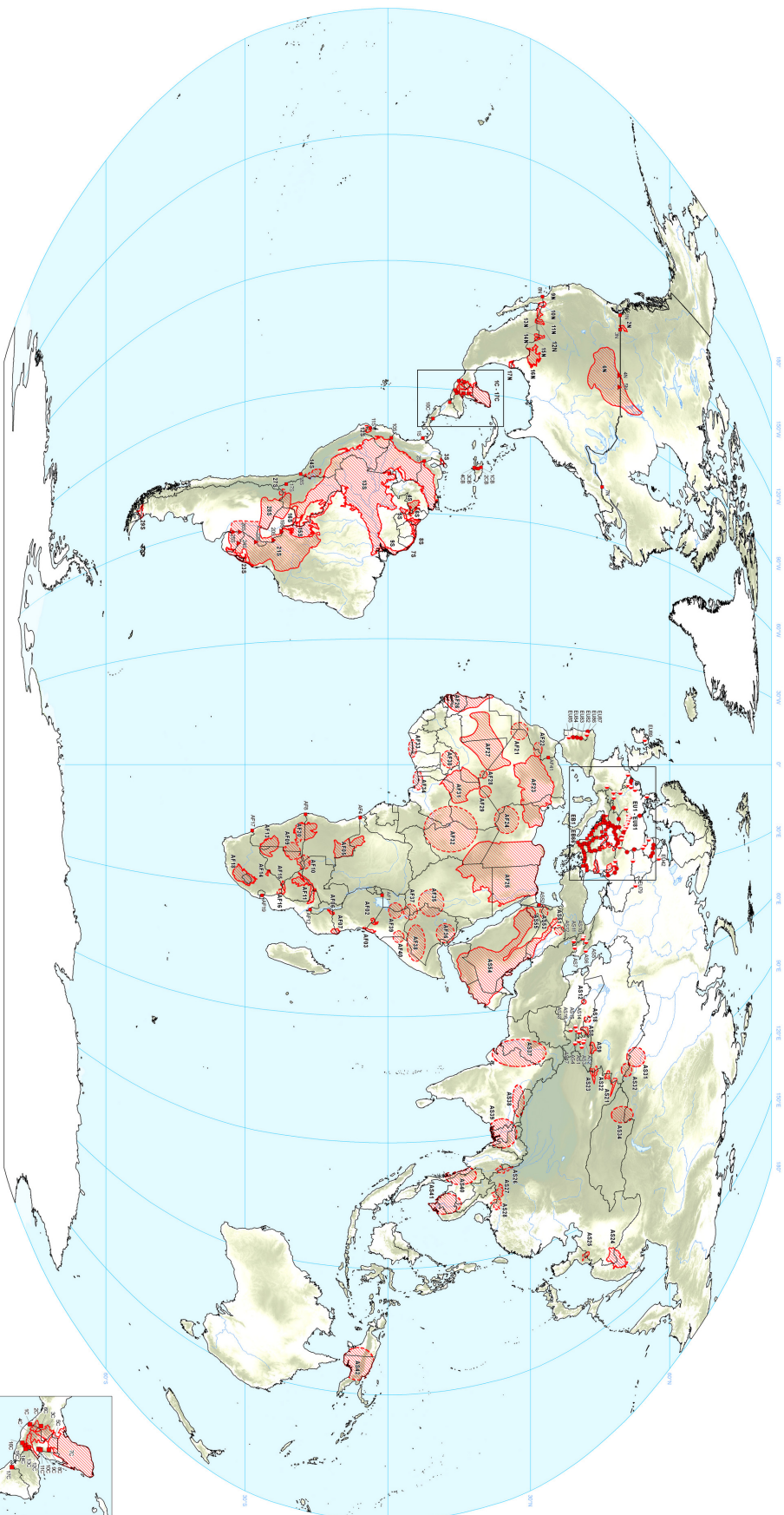
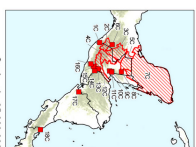


Transboundary Aquifers of the World

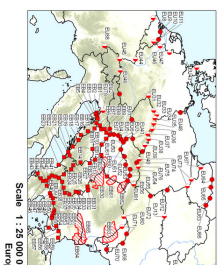
- Update 2009 -



Scale 1 : 50 000 000



Scale 1 : 25 000 000
Central America



Scale 1 : 25 000 000
Europe

Legend

Transboundary Aquifers

- Aquifer occurrence and extent
- confirmed boundary
- appropriate boundary
- small aquifer(s) with confirmed boundary
- supraposed aquifers

Aquifer occurrence

- aquifer confirmed by all countries involved
- aquifer confirmed by at least one country

Geographic elements

- political borders
- lakes
- rivers

Elevation

- ~ 9 km
- ~ 0 km (sea level)

Prepared by
IGRAC
Gordon M. MacDonald
Christoph M. Ludwig
Josef Rockman

Data source:
Country borders: <http://www.brookings.edu>
1:250,000 scale vector data: <http://www.ngs.gov>
Elevation: SRTM30 PLUS, U.S. Geological Survey
Dan Carter, NESDIS, NOAA, U.S. Department of Commerce, Boulder, CO, August 2008

Map production:
Final map design, geographic coordinates, symbols: IGRAC, Institute of Geographical Information Science, Leibniz University Hannover, Germany
© IGRAC, 2009
Author: Gordon M. MacDonald
Author: Christoph Ludwig
Author: Josef Rockman

Special Edition
for the 5th World Water Forum,
Istanbul, March 2009