

## Registration Form

Name: \_\_\_\_\_

Organization: \_\_\_\_\_

Designation: \_\_\_\_\_

Address:

\_\_\_\_\_  
\_\_\_\_\_

City: \_\_\_\_\_

Pin code: \_\_\_\_\_

Office Phone:(With Code) \_\_\_\_\_

Mobile Phone : \_\_\_\_\_

E-Mail: \_\_\_\_\_

A Demand Draft is enclosed for  
Rs. \_\_\_\_\_ No. \_\_\_\_\_ Dated  
\_\_\_\_\_

(\*Drawn in favour of "kCube Consultancy  
Services" payable at Chennai)

### Recommended Pre-requisites

Basic GIS Knowledge

### Batch Strength : 20

(Training slots will be filled on a first  
come, first serve basis)

### Registration Fee: Rs.8,000

Registration's done before February 15th 2010  
will get a discount of Rs.1,500/-. **No registra-  
tion will be considered until the payment  
is received.** Fee includes Course Material,  
MapServer Software CD, Lunch , Tea and  
Snacks for three days. Training will be con-  
ducted in Chennai. Venue will be intimated to  
participants one week before the program.  
Participants should make their own arrange-  
ment for stay.

## About kCube

kCube is a Geospatial company offering application  
development and data management services around  
FOSS4G (Free and Open Source Software for Geospa-  
tial). With a strong technical team kCube has provided  
innovative solutions using open source GIS. kCube has  
established itself as the leading provider of training solu-  
tions around Open Source GIS software packages.

## Recent Training Conducted

- Quantum GIS Training at IIT Madras
- MapServer Training at Chennai
- Quantum GIS Training at Assam Remote Sensing  
and Applications Center
- Quantum GIS and GRASS Training at Irrigation  
Management Training Institute, Tiruchirapalli

## Registration Procedure

Post the Registration form along with the DD to  
kCube Consultancy Services (P) Ltd  
No 23 Fourth Main Street  
Beasant Nagar  
Chennai 600 090

## Queries

For any queries send email to  
kumaran@kcubeconsulting.com  
or  
contact Kumaran at +91-9940111282

## Three Day Training Program On Open Source Web GIS Using UMN MapServer

10<sup>th</sup>-12<sup>th</sup> March, 2010  
at  
Chennai

Conducted by



kCube Consultancy Services  
No 23 Fourth Main Street  
Beasant Nagar  
Chennai 600 090  
www.kcubeconsulting.com  
+91-44-24462505  
+91-9940111282

## Web GIS

The power of Geographical Information Systems is leveraged when geospatial data is published and managed in a distributed environment through web browsers. Web GIS allows users to disseminate Geographical data over the web and allows them to perform various GIS functions over the web. This drastically reduces the need for localized GIS software's.

However, life-cycle cost of commercial Web GIS packages and the ever changing hardware requirements to support these packages make the economics of implementation difficult.

Until recently open-source Web GIS frameworks did not have the capabilities of commercial packages. Recent developments by the open-source community has resulted in the development of UMN MapServer which is a Open Source platform for publishing spatial data and to develop interactive mapping applications to the web.

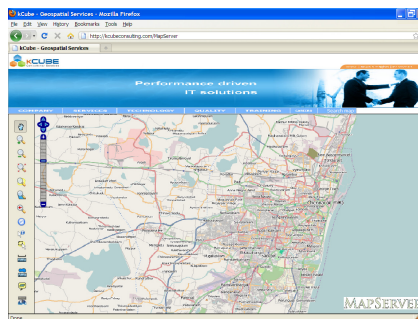
This training program in UMN MapServer is organized to introduce GIS users to the basic features of this powerful web mapping framework.

## UMN MapServer

- Support for display and querying of hundreds of raster, vector, and database formats
- Ability to run on various operating systems (Windows, Linux, Mac OS X, etc.)
- Support for popular scripting languages and development environments (PHP, Python, Perl, Ruby, Java, .NET)
- On-the-fly projections
- High quality rendering
- Fully customizable application output
- Many ready-to-use Open Source application frameworks

### What you will gain from the training?

- Download and Install MapServer
- Understand the architecture of MapServer — Pros and Cons
- Create Map Configuration File
- Display Spatial data from various data sources like Shapefile, PostGIS etc...
- Create Various Classes and Style Objects
- Develop a Web GIS Application



## Course Topics

### Day 1:

- Introduction to MapServer
- Installing MapServer
- Introduction to Mapfile
- Templating
- Displaying Vector and Raster Layers
- Applying Styles and Symbology
- Layer Controls - Switch On/Off Layers
- Map Navigation using Templates

### Day 2:

- Label, Scalebar and Overview map
- Feature Classification and Legend
- Variable Substitution
- Feature Querying and Joins

### Day 3:

- Advanced Mapfile options
- Introduction to WMS and WFS
- Displaying Maps from WMS, PostGIS and other Data Sources
- Integrating with OpenLayers
- MapServer Tips and Tricks for Production Implementation

**Concepts will be covered using MapServer templates. All Concepts will be reinforced with lab sessions**