

**FLOOD HAZARD MAP
(1998-2007)**
MARIGAON DISTRICT, ASSAM



Legend

- Settlements
- - - District boundary
- Major roads
- +— Railway

Flood Hazard

- Very Low
- Low
- Moderate
- High
- Very High
- Normal river/water bodies

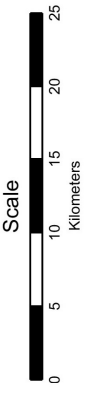
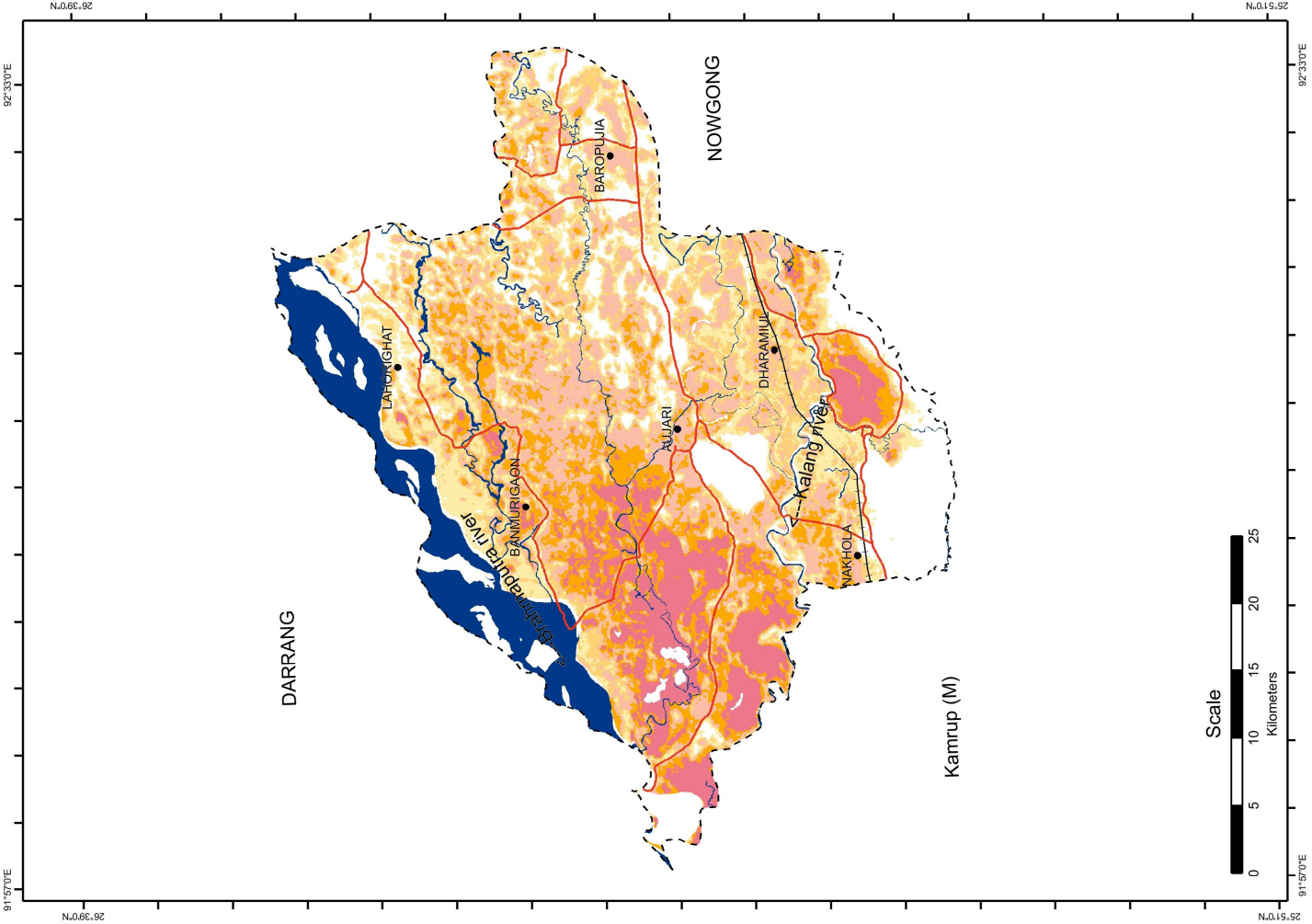
Approach

Satellite data was acquired during the floods of 1998-2007. Flood inundation was extracted from these satellite datasets. These layers were integrated to generate a flood hazard layer, which provides the details on how frequently a given area is subjected to floods. About 90 satellite datasets were used for creating this layer. The frequency of inundation observed is further classified into different categories based on the frequency of flood inundation for a particular area

- VERY LOW - for 1-2 times
- LOW - for 3-4 times
- MODERATE - for 5-6 times
- HIGH - for 7-8 times
- VERY HIGH - for 9-10 times

Prepared by:

National Remote Sensing Centre (NRSC)
Indian Space Research Organisation (ISRO)
Department of Space, Government of India
Balanagar, Hyderabad - 500 125

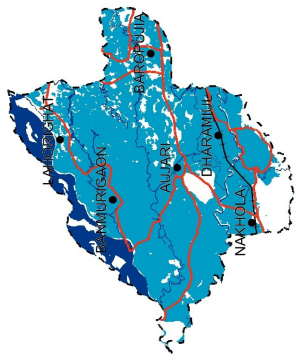


Location Map



Assam State

**Total Inundation Map
(1998-2007)**



Flood Inundation